



NECLIME Annual Conference 2026, Xishuangbanna, China

November 1-8

First Circular

Dear colleagues and NECLIME members,

We are delighted to invite you to participate in the 26th Annual NECLIME Conference, which will be held in Xishuangbanna, Yunnan Province, China from November 1st to 8th, 2026. We are looking forward to your registrations and to seeing you in Xishuangbanna!

The main focus of the conference this year will be

Cenozoic tropical and subtropical paleofloras of Eurasia

We welcome contributions on

- Quantitative, proxy-data based reconstructions of paleoclimate and paleovegetation patterns in time and space,
- Analyses of interactions between paleogeography, vegetation, fauna and climate, including climate and biome modelling approaches, and
- Studies on the history of biodiversity, with quantitative data as well as aspects of evolution and dispersal.
- and all topics related to NECLIME.

Please feel free to distribute this information to interested colleagues.

Organizing committee Jian Huang, Shufeng Li, Angela Bruch.

Important information:

The conference will be held offline.

The **deadline** for final registration and abstract submission for the NECLIME Annual Conference is **May 4, 2026**.

After registration, we will send an official invitation to apply for a visa to those who need it. **Please let us know in time if you require an official invitation.**

Please register for the conference by sending an email to Jian Huang (huangjian@xtbg.ac.cn).

Abstracts for oral or poster contributions have to be submitted using the **attached abstract form**; the size should not exceed approximately 3,000 characters.. All submitted abstracts will be published in an abstract volume.

The Venue

The conference will be held at the Xishuangbanna Tropical Botanical Garden (XTBG), Chinese Academy of Sciences, Yunnan, China



Xishuangbanna Tropical Botanical Garden, the largest Botanical Garden in China

Travel and accommodation

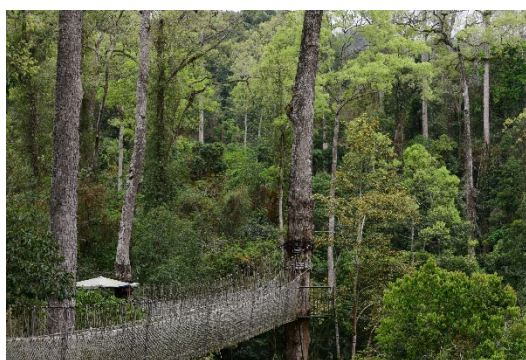
The accommodation is at the Royal Waterlily Hotel (Resort hotel with swimming pool) inside the botanical garden. Costs are included in the conference fee (see below).

Conference excursions:

- Botanical garden tours
- One-day tour excursion to the tropical rainforest of Sky Tree Park in Xishuangbanna; This is the most typical tropical rainforest in China, composed of tall trees from the Dipterocarpaceae family, full of tropical biodiversity.



Sky Tree Park Tropical Rainforest



Canopy Walk

Post-conference field trip

After the meeting, on November 5th – 8th, we offer a four-day field excursion you can choose to participate in.

We will conduct visits at 3 sites: 1. Wild Elephant Valley Park: This park features well-preserved tropical forests and long forest walkways, allowing you to safely observe the activities of wild Asian elephants and other tropical animals up close; 2. Yuanjiang Ecological Station: Here you can explore China's largest tropical savanna and experience its floristic connections to ancient Gondwana flora; 3. Areas around Fuxian Lake in Chengjiang: This beautiful faulted plateau lake is surrounded by limestone mountains preserving Tertiary relic sclerophyll vegetation, and it is also home to the world-famous Chengjiang

fossil site of the Cambrian explosion.

Preliminary schedule

November 1st

Arrival, hotel accommodation, registration, welcome dinner

November 2nd

Registration; Scientific Sessions: Oral and poster presentations

November 3rd

Oral and poster presentations; Final discussion

Visit to the botanical garden

November 4th

Visit to the tropical rainforest of Sky Tree Park; back to XTBG (200 km)

November 5th

Departure from XTBG and visit to the Wild Elephant Valley Park, accommodation at Yuanjiang County, Yunnan (360 Km)

November 6th

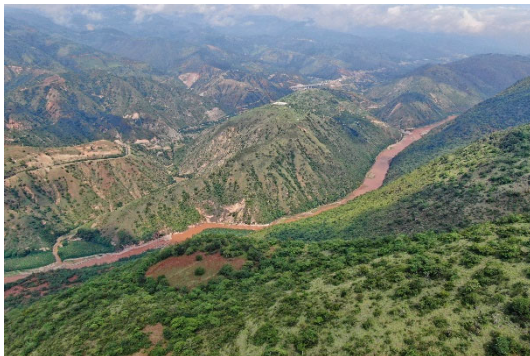
Excursion to the tropical savannah in Yuanjiang Ecological Station; transfer to Chengjiang County (200 km)



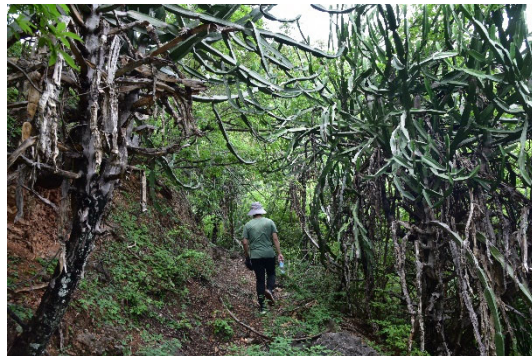
Wild Asian Elephant (*Elephas maximus*)



Sunda Slow Loris (*Nycticebus coucang*)



Tropical Savannah of the Red River Valley



Succulent Euphorbia Forest

November 7th

Excursion to limestone vegetation and cultural relics near Fuxianhu Lake; accommodation in Chengjiang County.

November 8th

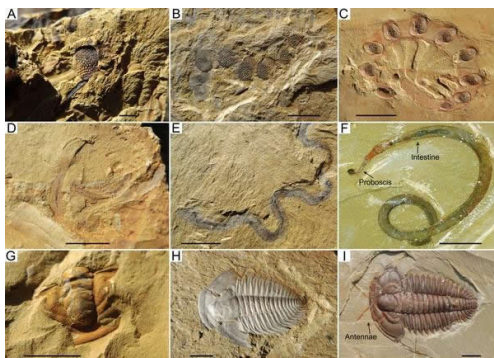
Visit to the Cambrian Chengjiang biota Site & Museum in Chengjiang; transfer to Kunming (60 km); Departure



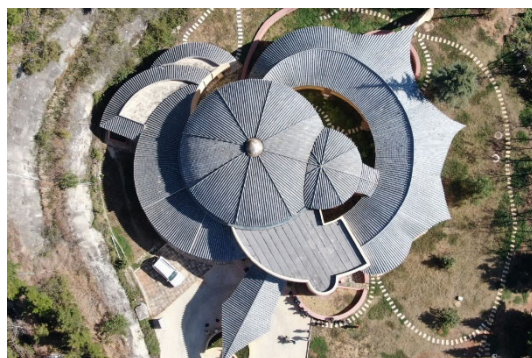
Fuxian Lake



Tertiary Relict Limestone Vegetation



the Cambrian Chengjiang biota



Chengjiang biota site & museum

Conference and excursion fees

The **conference fee** includes accommodation at the Royal Waterlily Hotel for 4 nights (check-in Nov 1st), meals (breakfast, lunch, dinner), airport transfer, conference excursions (garden tour and Sky Tree Park), as well as conference materials.

The conference fee is **€240 (shared room); €360 (single room)**.

Fee for the Post Meeting Excursion (Nov 5-8) includes transport, accommodation, meals (breakfast, lunch, dinner), and entrance fees. It is **€170 (shared room); €230 (single room)**.

The total distance is about 700 kilometers (most of the route is on the highway, relatively easy). For the field trip, please bring trekking shoes. In tropical areas, the sunlight is quite intense, so it's important to have sunscreen, clothing, and a hat ready. The weather in November is ~15°C at night and 25~30°C in the daytime, usually without precipitation.